

REVISION RECORD			
REV	ECO	DESCRIPTION	DRFT

NOTES:

MATERIAL :

- 1.HOUSING MATERIAL :GLASS FILLED POLYESTER UL94V-0.
- 2.CONTACT MATERIAL :PHOSPHOR BRONZE $\phi 0.46\text{mm}$.
- 3.PLATING :GOLD PLATING OVER NICKEL.

ELECTRICAL:

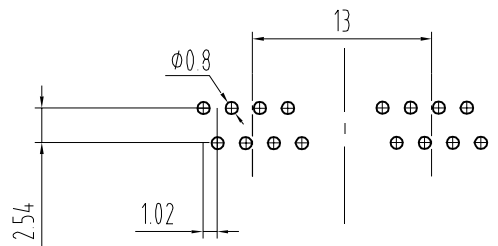
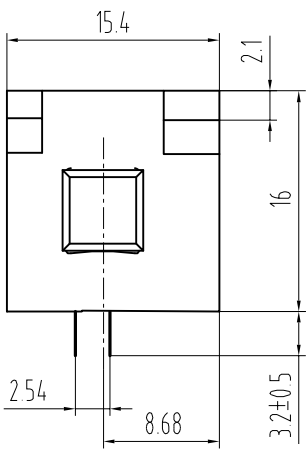
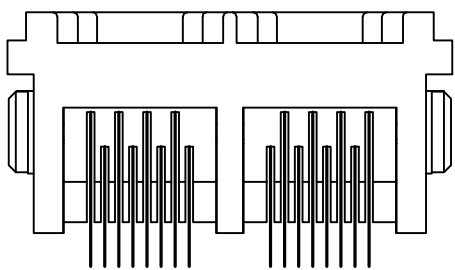
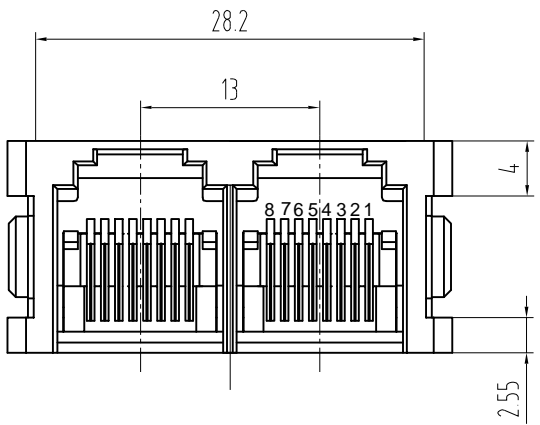
- 1.VOLTAGE RATING :125 VAC RMS.
- 2.CURRENT RATING :1.5 AMP.
- 3.CONTACT RESISTANCE :30 MILLIOHMS MAX.
- 4.INSULATION RESISTANCE :500 MEGOHMS MIN @ 500V DC .
- 5.DIELECTRIC WITHSTANDING RESISTANCE :1000V AC RMS 50Hz. 1MIN.

MECHANICAL:

- 1.DURRABILITY :750 CYCLES MIN.
- 2.PCB RETENTION PRE-SOLDER :1 LB MIN.

ENVIRONMENTAL:

- 1. STORAGE : -40 $^{\circ}$ C~+85 $^{\circ}$ C
- 2. OPERATION : 0 $^{\circ}$ C TO 70 $^{\circ}$ C.



PC Board Layout
Component Side Shown

DETAILED LISTS	MM ← INCH →		DFTO SHB	DATE 2007.05.03	<h1 style="margin: 0;">Coorle 库乐科技</h1> <h2 style="margin: 0;">5225 8P8C 1*2 180D</h2>
	TOLERANCES EXCEPT AS NOTED		CHKD LANBO	DATE 2007.05.03	
	MM		MFD	DATE	
	.0 ± 0.15	±	APPVL	DATE	
	.40 ± 0.075	±	MATERIAL :		
.000 ± 0.05	±	QT'Y :			
ANGLES ± 0.5		FINISH :		DRAWING NO. TESSD1001	
 THIRD ANGLE PROJECTION		SCALE :		/PART NO.	
DO NOT SCALE DRAWING				SHEET X	